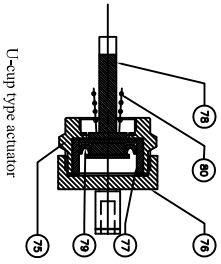
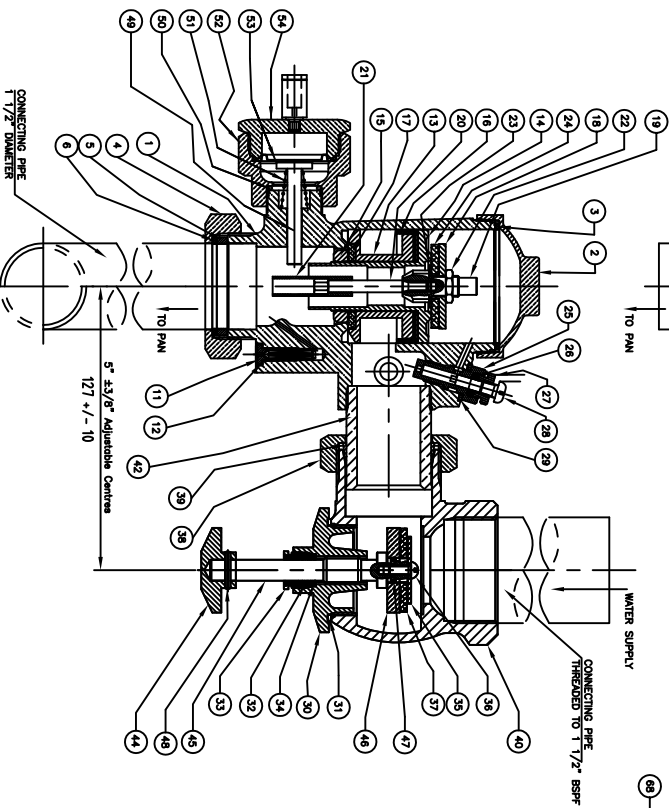
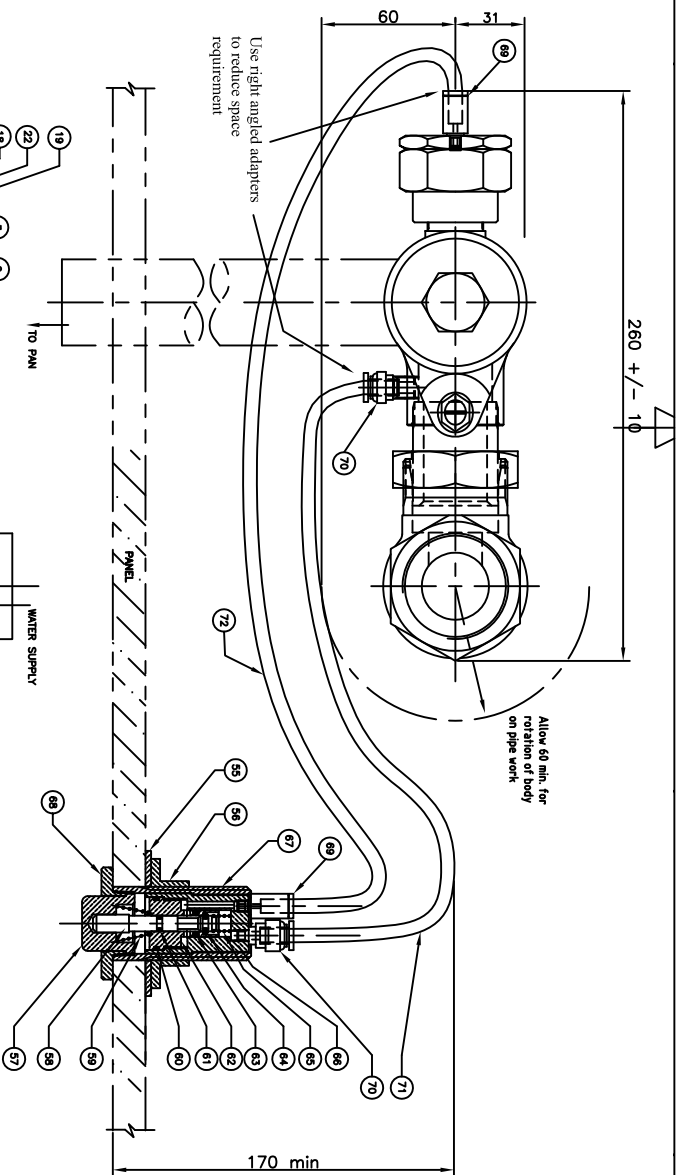


\* 40mm for wall thickness greater than 150mm

For future maintenance purposes, off-fluke adapter and diaphragm housing must be accessible



U-cup type actuator



CONNECTING PIPE 1 1/2\"/>

Drawn by  
R. NAPTHALI

Checked by

Origination\_Date

Issue Date  
20.09.04

Scale  
NTS

Title  
HYDRAULIC FLUSH VALVE B1-H

MATERIAL

**PUBCO PRODUCTS AND ENGINEERING**

Drawing No

250-B1-H DIM

Issue No

0

Sheet

1/2

Issue No

Revision note

Date

Issued by Approved

3A South Street, Rydalmere, NSW 2116  
Ph. (02) 9684 2182, Fax: (02) 9638 2764

Item No	Qty	Part No	Description
1	1	250-01-81H	FLUSH VALVE BODY
2	1	250-02A	FLUSH VALVE CAP - MODEL B4
3	1	250-03	FLUSH VALVE CAP WASHER
4	1	250-07A	FLUSH PIPE COUPLING NUT-MODEL B4
5	1	250-08	RUBBER WASHER FOR COUPLING NUT
6	1	250-09	COUPLING NUT WASHER
7	---	---	---NOT USED---
8	---	---	---NOT USED---
9	---	---	---NOT USED---
10	---	---	---NOT USED---
11	1	250-16A	AIR VALVE COMPLETE ASSEMBLY
12	1	250-17	FIBRE WASHER FOR AIR VALVE
13	1	250-18	MAIN VALVE BODY
14	1	250-19	MAIN VALVE STEM
15	1	250-21	MAIN VALVE BODY BRASS NUT
16	1	250-22	BUCKET WASHER
17	1	250-23	MAIN VALVE BODY RUBBER WASHER
18	1	250-24	AUXILIARY VALVE PLATE
19	1	250-25	AUXILIARY VALVE GUIDE
20	1	250-26	AUXILIARY VALVE STEM
21	1	250-27	AUXILIARY VALVE SLEEVE
22	1	250-28	AUXILIARY VALVE LOCK NUT
23	1	250-29A	AUXILIARY VALVE STAINLESS STEEL WASHER
24	1	250-30	AUXILIARY VALVE RUBBER WASHER
25	1	250-31	ADJUSTING VALVE BODY
26	1	250-32A	ADJUSTING VALVE GRAPHITE PACKING
27	1	250-32	ADJUSTING VALVE GLAND NUT
28	1	250-33	ADJUSTING VALVE SCREW
29	1	250-35	ADJUSTING VALVE WASHER
30	1	250-36A	STOP COCK CAP
31	1	250-39	STOP COCK CAP WASHER
32	1	250-41A	STOP COCK GRAPHITE PACKING
33	1	250-41	STOP COCK PACKING GLAND
34	1	250-42	STOP COCK PACKING GLAND WASHER
35	1	250-43	STOP COCK STAINLESS STEEL WASHER
36	1	250-44	SS SCREW-3/16"x3/8" LG WHITWORTH
37	1	250-45	STOP COCK VALVE RUBBER WASHER

Item No	Qty	Part No	Description
38	1	250-51	STOP COCK COUPLING NUT
39	1	250-52A/52B	COMPRESSION RING
40	1	250-96	ADJUSTABLE CENTRE STOP COCK BODY
41	---	---	---NOT USED---
42	1	250-113	ADJUSTABLE CENTRE NIPPLE
43	---	---	---NOT USED---
44	1	250-115	STOP COCK WHEEL
45	1	250-116A/116B	STOP COCK STEM
46	1	250-117	STOP COCK VALVE STEM PLATE
47	1	250-120	O RING - BS011 - NITRILE RUBBER
48	1	250-121	ROLLED SPRING PIN S/S
49	1	250-14B	OPERATING STEM - HYDRAULIC
50	1	250-130	O RING - BS019 - EPDM
51	1	250-131A 250-131B	OPERATING STEM SPRING HYDRAULIC-TAPER 60MPa + PARALLEL 30 TO 60MPa
52	1	250-132	ACTUATOR DIAPHRAGM HOUSING BODY
53	1	250-134A 250-134B	ACTUATOR DIAPHRAGM - DURO 70 EPDM ACTUATOR DIAPHRAGM - DURO 60 NITRILE
54	1	250-133	ACTUATOR DIAPHRAGM HOUSING CAP
55	1	250-128	BACK PLATE
56	1	250-129	FLANGED BACK NUT
57	1	250-135	C.P HYDRAULIC VALVE PUSH BUTTON
58	1	250-136	HYDRAULIC VALVE STEM
59	1	250-137	HYDRAULIC PUSH BUTTON SPRING S/S316 TAPER
60	1	250-138	O RING - BS019 - EPDM
61	1	250-139	O RING - BS007 - EPDM
62	1	250-143	HYDRAULIC VALVE SEAT
63	1	250-140	O RING - METRIC 8x2 - NITRILE RUBBER
64	1	250-141	O RING - BS105 - EPDM
65	1	250-142	HYDRAULIC VALVE STEM SPRING S/S GROUND
66	1	250-144	HYDRAULIC VALVE BODY
67	1	250-145	HYDRAULIC VALVE ADAPTOR-SHORT SLEEVE
68	1	250-147	C.P WALL FLANGE HYDRAULIC - 2"

Item No	Qty	Part No	Description
69	1	250-149	AIRLINE ADAPTOR 6mm TUBE - M5
70	1	250-150	NORGREN C AIRLINE FITTING 6mm - M5
71	1	250-151	RED COLOUR 6mm TUBE POLYURETHANE
72	1	250-152	BLACK COLOUR 6mm TUBE POLYURETHANE
73	1	250-146	HYDRAULIC VALVE ADAPTOR-LONG SLEEVE
74	1	250-148	C.P WALL FLANGE HYDRAULIC - 3"
75	1	250-153	PISTON ACTUATOR HOUSING BODY
76	1	250-154	PISTON ACTUATOR HOUSING CAP
77	1	250-155	PISTON ACTUATOR HOUSING SLEEVE
78	1	250-156	PISTON ACTUATOR STEM
79	1	250-157	PISTON ACTUATOR STEM U-CUP
80	1	250-158	PISTON ACTUATOR STEM SPRING
81	1	250-159	PRESSURE OFFTAKE Y-PIECE ADAPTOR

Drawn by R. NAPTHALI  
 Checked by \_\_\_\_\_  
 Title: DUAL FLUSH B4H PARTS LIST  
 Origination\_Date \_\_\_\_\_  
 Issue Date 29/08/09  
 Scale \_\_\_\_\_

Revision note \_\_\_\_\_  
 Date \_\_\_\_\_  
 Issued by \_\_\_\_\_  
 Approved \_\_\_\_\_

**PUBCO PRODUCTS AND ENGINEERING**  
 3A South Street, Rydalmere, NSW 2116  
 Ph. (02) 9684 2182, Fax: (02) 9638 2764  
 Drawing No 250 B4H PARTS  
 Issue No 0  
 Sheet 2/2  
 MATERIAL