

# PUBCO

## CONCEALED SINGLE-FLUSH VALVE FOOT PEDAL OPERATED MODEL B1-SF FPO

Manually  
Operated



Foot Pedal and Flange



Hydraulically  
Operated

### **Foot pedal operated flushing valve for tank supplied, independent flusherette systems.**

*Hygienic operation. Generally can be fitted to any flusherette installation with no pan or pipe work modification required.*

**W WaterMark Level 1 WMKA00335**

**WELS Licence No.0098**

**1 star or 3 star configurations.**

This valve is manufactured in Australia and has been designed to provide many years of reliable operation. It is made from best quality materials with few replacement parts required.

The valve castings are all bronze and the working brass components are DR brass.

**SPECIFICATIONS**

**PRESSURE** 30 to 300 kPa static pressure.

Pipe sizing must be adequate to provide a minimum flow pressure of 24 kPa.

**INLET AND OUTLET CONNECTIONS (40mm nom.)**

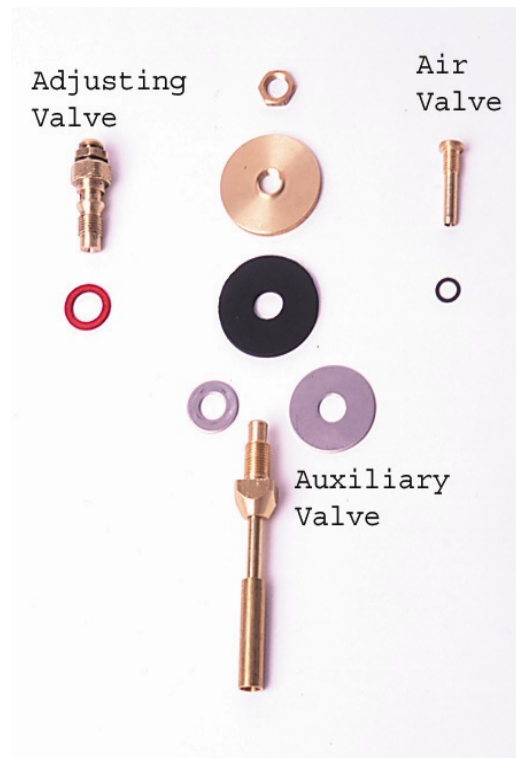
Inlet thread is 1 ½ inch BSP female and outlet is 1 ½ inch BSP male with compression rubber seal for sealing 1 ½ inch tubing.

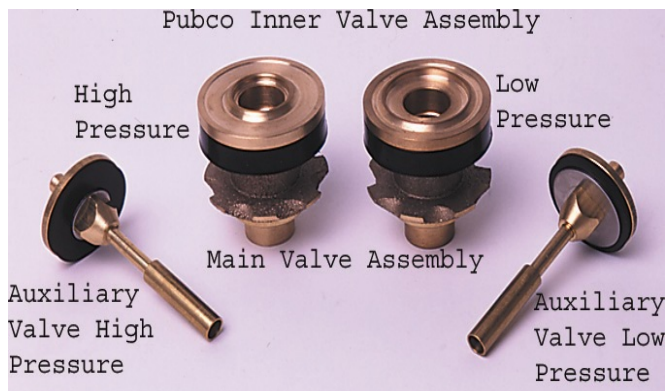
Adjustable coupling with the stop valve to give a centre distance of 127 mm +/- 10 mm is standard.

**SPARE PARTS AND COMPONENTS**

All parts are available for the valve including internal parts, linkages and adapters and the foot pedal mechanism parts.

The foot pedal mechanism has a very important overall length which is determined by the wall thickness. Normally the chrome plated front flange and button only needs to be replaced.





## VOLUME

Volume is adjustable on the flush valves but is factory set at the specified volume.

The pipe work must have a 1 ½ inch( 40 mm nom.) feed line to the valve and the reticulation pipe work must be of sufficient size to provide a minimum flow rate of 1.3 litres per second, allowing for simultaneous use.

The Pubco dual flush valve is available in volume adjustments of:

- |           |                    |
|-----------|--------------------|
| 5.5 litre | 1 star WELS rating |
| 4.0 litre | 3 star WELS rating |

## CONVERSION FROM MANUAL MECHANISM TO HYDRAULIC OPERATION

The valve can be converted to hydraulic operation generally with no pipe work modification.

A new hydraulic pedal assembly can be placed where the existing foot pedal is located.

A push button mechanism can be used as a replacement for the foot pedal. A new hole obviously must be placed on the wall at suitable height above the pan and access available at this location. See brochure B4H-SF.

A valve only can be fitted to existing Pubco stop valves but the correct coupling must be specified. A fixed coupling was used between 1945 and 1967 and an adjustable type coupling was used from 1967 to the present. See brochure B4-SF for coupling types.

The stop valve spindle should be serviced or replaced.

The conversion to hydraulic operation cannot be done where the valve is located below the pan inlet.



## MAINTENANCE

All parts are available to purchase or Pubco can service any part in our premises.

## WARRANTY

The Pubco flush valve is guaranteed against manufacturing or material defects for a period of 2 years. This is a conditional warranty. Please contact Pubco for full details.

## PUBCO PRODUCTS AND ENGINEERING

3A SOUTH ST,

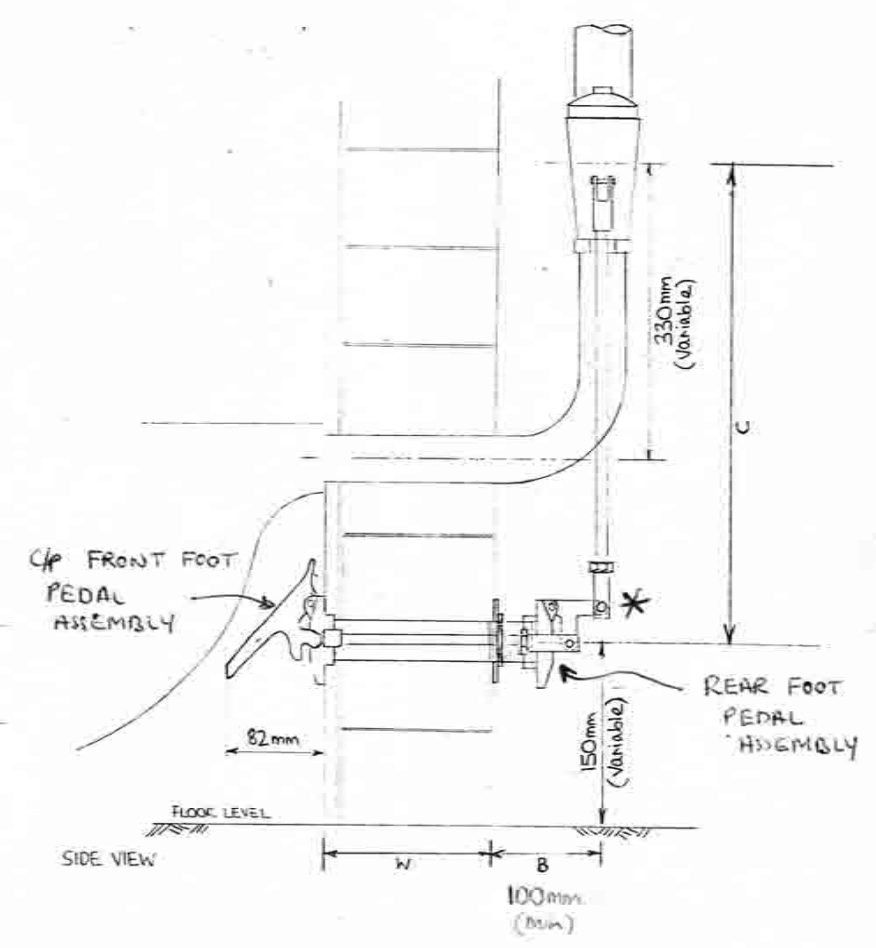
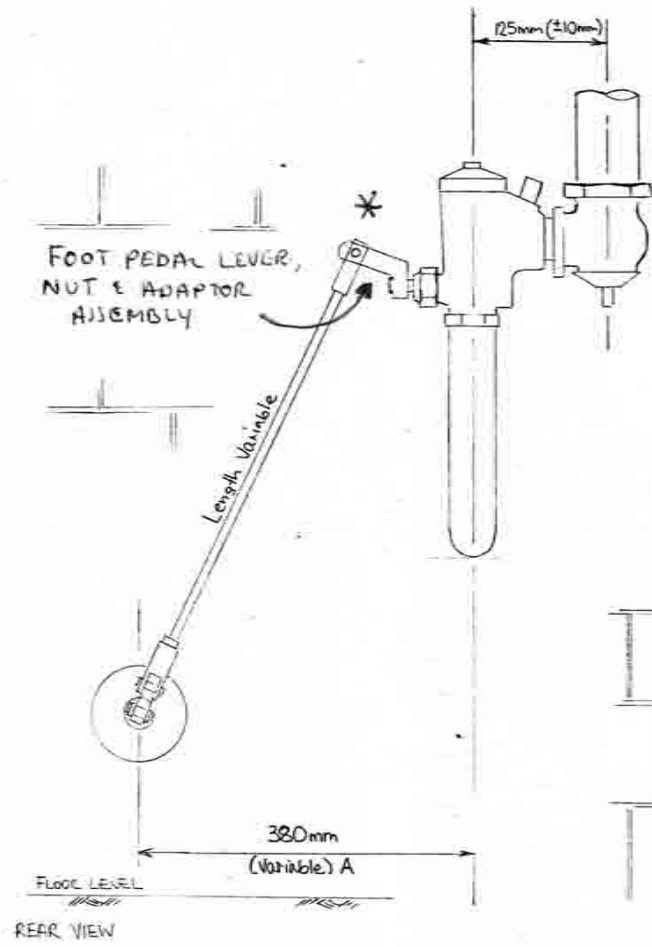
(PO BOX 265)

RYDALMERE NSW 2116

T 02 9684 2182

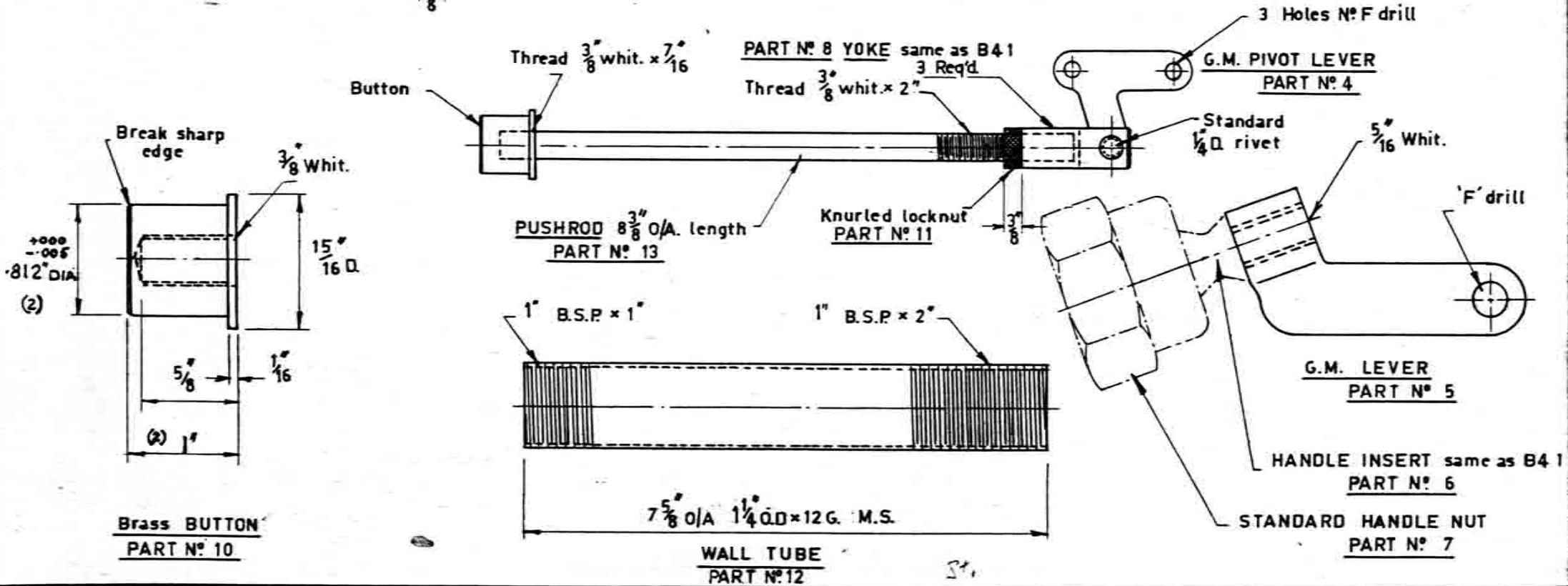
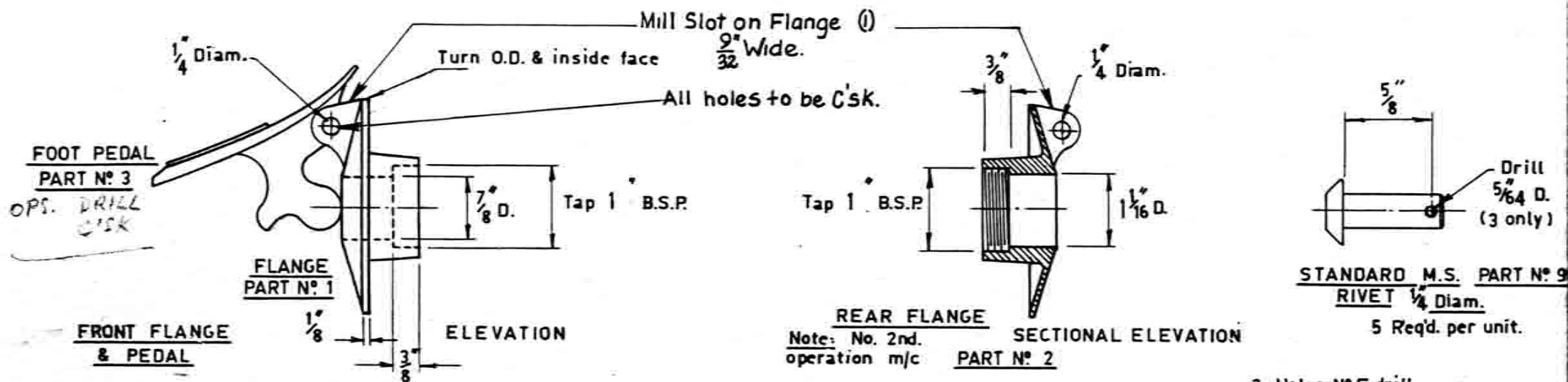
F 02 9638 2764

E-mail [sales@pubco.com.au](mailto:sales@pubco.com.au)



- NOTES
1. \* It is important that all linkages are fixed in the attitude \* shown on this drawing
  2. Dimensions shown can be varied to suit required installation
  3. When ordering, dimensions: A, B, C, and W should be indicated to allow lengths of wall tube and connecting rods to be calculated.
  4. Generally connecting rods require cutting on site and for this purpose rods are usually longer than required and extra threading is provided.

DATE	REVISION	BY	PUBCO PRODUCTS AND ENGINEERING 1987	
			PUBCO CONCEALED FOOT PEDAL OPERATED FLUSH VALVE INSTALLATION	
			DRAWN	CHECKED
			SCALE	DRAWING No.
			N.T.S	FRO/1



ALPHA ENG. CO. PTY. LTD.

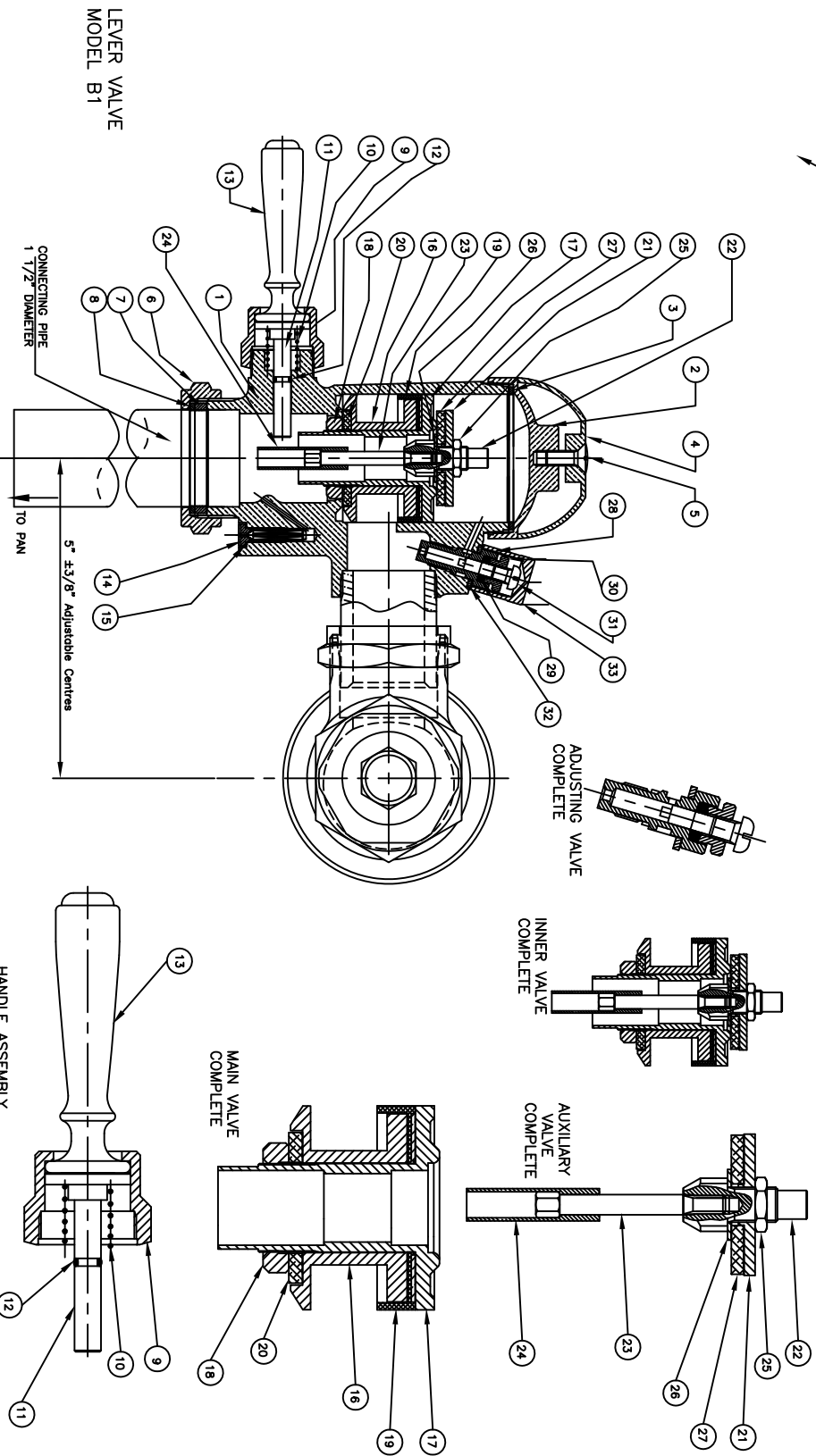
MOXON ROAD, PUNCHBOWL

PUBCO CONCEALED B1

FOOT PEDAL OPERATING MECHANISM

Tol.	Part No.	Scal.	1/2 & FULL
Projection:	Appd. by	Drn.	AWA
All dimensions in inches.	No. /unit	Date	22-4-64
		Issued unless stated	

ITEM NUMBER  
33  
SELECT PART NO.  
FROM PARTS  
LISTING



LEVER VALVE  
MODEL B1

CONNECTING PIPE  
1 1/2" DIAMETER

5" ±3/8" Adjustable Centres

HANDLE ASSEMBLY  
COMPLETE

MAIN VALVE  
COMPLETE

INNER VALVE  
COMPLETE

AUXILIARY  
VALVE  
COMPLETE

Title		Drawn by		Checked by		Origination Date		Issue Date		Scale	
VALVE ASSEMBLY PARTS		RNAPTHALI						13/06/04		1:1	
Title		Drawing No		MATERIAL							
PUBCO PRODUCTS AND ENGINEERING		250 - B1 - 1									
3A South Street, Rydalmere, NSW 21116 Ph. (02) 9684 2182, Fax. (02) 9638 2764		Issue No		Issue No		Issue No		Issue No		Sheet	
Revision note		Date		Issued by		Approved		0		1/1	
1		2		3		4		5		6	



Item No	Qty	Part No	Description
1	1	250-01-B1	FLUSH VALVE BODY
2	1	250-02B	C.P FLUSH VALVE CAP - MODEL B1
3	1	250-03	FLUSH VALVE CAP WASHER
4	1	250-04	C.P FLUSH CAP COVER DOME
5	1	250-05	C.P BUFFER CAP SCREW
6	1	250-07B	C.P FLUSH PIPE COUPLING NUT-MODEL B1
7	1	250-08	RUBBER WASHER FOR COUPLING NUT
8	1	250-09	COUPLING NUT WASHER
9	1	250-11	OPERATING HANDLE NUT
10	1	250-13	OPERATING STEM SPRING
11	1	250-14	OPERATING STEM - O RING TYPE
12	1	250-14A	O RING - BS008 - NITRILE RUBBER
13	1	250-10	OPERATING HANDLE
14	1	250-16A	AIR VALVE COMPLETE ASSEMBLY
15	1	250-17	FIBRE WASHER FOR AIR VALVE
16	1	250-18	MAIN VALVE BODY
17	1	250-19	MAIN VALVE STEM
18	1	250-21	MAIN VALVE BODY BRASS NUT
19	1	250-22	BUCKET WASHER
20	1	250-23	MAIN VALVE BODY RUBBER WASHER
21	1	250-24	AUXILIARY VALVE PLATE
22	1	250-25	AUXILIARY VALVE GUIDE
23	1	250-26	AUXILIARY VALVE STEM
24	1	250-27	AUXILIARY VALVE SLEEVE
25	1	250-28	AUXILIARY VALVE LOCK NUT
26	1	250-29A	AUXILIARY VALVE STAINLESS STEEL WASHER
27	1	250-30	AUXILIARY VALVE RUBBER WASHER

Item No	Qty	Part No	Description
28	1	250-31A	ADJUSTING VALVE BODY
29	1	250-32A	ADJUSTING VALVE GRAPHITE PACKING
30	1	250-32	ADJUSTING VALVE GLAND NUT
31	1	250-33	ADJUSTING VALVE SCREW
32	1	250-35	ADJUSTING VALVE WASHER
33	1	250-36	C.P ADJUSTING VALVE CAP
34	1	250-38B	STOP COCK CAP - B1
35	1	250-39	STOP COCK CAP WASHER
36	1	250-41A	STOP COCK GRAPHITE PACKING
37	1	250-41	STOP COCK PACKING GLAND
38	1	250-42	STOP COCK PACKING GLAND WASHER
39	1	250-43	STOP COCK STAINLESS STEEL WASHER
40	1	250-44	SS SCREW-3/16"x3/8" LG WHITWORTH
41	1	250-45	STOP COCK VALVE RUBBER WASHER
42	1	250-120	O RING - BS011 - NITRILE RUBBER
43	1	250-117	STOP COCK VALVE STEM PLATE
44	1	250-116B	STOP COCK STEM
45	1	250-46	C.P CAP FOR STOP COCK STEM
46	1	250-96	ADJUSTABLE CENTRE STOP COCK BODY
47	1	250-47	C.P ESCUTCHEON PLATE FOR STOP COCK
48	1	250-51B	C.P STOP COCK COUPLING NUT - B1
49	1	250-52A/52B	COMPRESSION RING
50	1	250-113	ADJUSTABLE CENTRE NIPPLE
51	1	250-153	DUAL FLUSH BUTTON - LARGE
52	1	250-14 DF	OPERATING STEM DUAL FLUSH

Drawn by R.NAPTHALI	Checked by	Origination _Date		Issue Date	Scale
Title <b>LEVER FLUSH VALVE - B1</b>			MATERIAL		

<b>PUBCO PRODUCTS AND ENGINEERING</b>		Drawing No	Issue No	Sheet
3A South Street, Rydalmere, NSW 21116 Ph. (02) 9684 2182, Fax. (02) 9638 2764		<b>250 - B1 / DF</b>	0	2/2

Issue No	Revision note	Date	Issued by	Approved
1				